



GY 1133



GY 1131



GY 1129 &
GY 1130



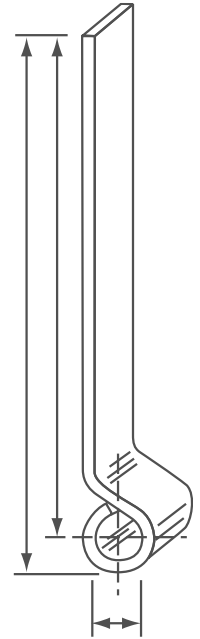
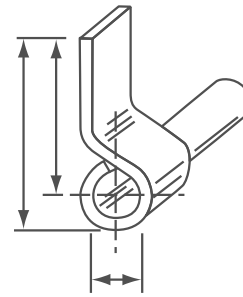
GY 1152A



GY 1146



GY 1145



NOTE

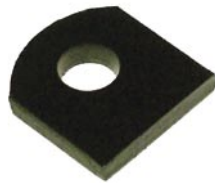
Available in right and left hand assembly please advise requirements

Holes provided in ZP gudgeons

LH drawn



GY 1191 & 1192



GY 1137



GY 1190



GY 1136



GY 1134
(LH & RH)
(Black)



GY 1101



GY 1102



GY 1103A (ZP)



GY 1103



GY 1186



GY 1187



GY 1188
(LH & RH)

DROPSIDE TAILGATE HINGE

PART No.	A	B	C	FINISH
GY 1129	100	87.5	13	BLACK MS
GY 1130	100	87.5	13	ZINC PLATED
GY 1131	305	292.5	13	BLACK MS
GY 1133	50	40	13	BLACK MS
GY 1145	95	83	13	BLACK MS
GY 1146	95	83	13	ZINC PLATED
GY 1152A	237	225	13	ZINC PLATED
GY 1190	41	25	16	BLACK MS

ALL HOLES 8.3mm DIAMETER

GUDGEON ROPERAIL BRACKET

PART No.	A	B	C	FINISH
GY 1186	111.6	94		ZINC PLATED
GY 1187	92.6	75		ZINC PLATED
GY 1188	87.6	75		ZINC PLATED

GUDGEONS

PART No.	A	B	C	FINISH
GY 1134	50	39.5	13	BLACK MS NO HOLES
GY 1135A	50	39.5	13	ZINC PLATED 2 HOLES
GY 1147	22	12.5	13	BLACK MS
GY 1101	1 HOLE			ZINC PLATED
GY 1101	2 HOLES			ZINC PLATED
GY 1103				BLACK
GY 1103A	LONG			ZINC PLATED
GY 1102				BLACK MS
GY 1191LH	65	50	16	BLACK MS
GY 1192RH	65	50	16	BLACK MS