



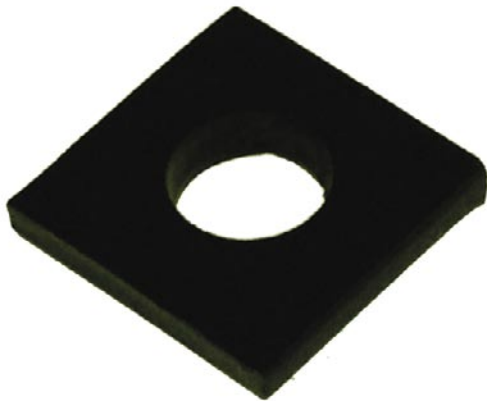
Axel Saddles



GY11



GY9



GY 16



GY 72, GY 73, GY 74, GY 75

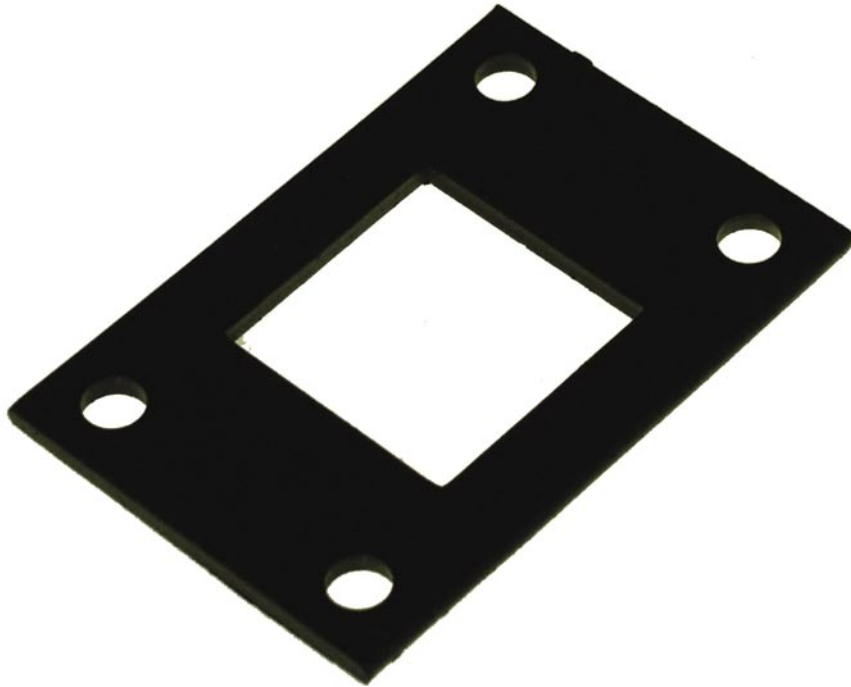
GY 16 **AXLE SADDLE**
40 x 40 x 8mm
18mm hole in centre

AXLE SADDLES

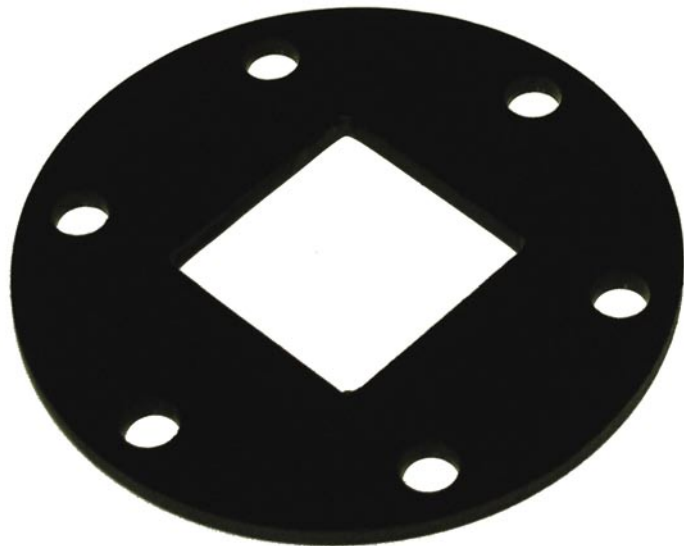
| PART No. | MAT | AXLE SIZE |
|----------|--------|-----------|
| GY 72 | 40 x 8 | 40sq |
| GY 73 | 40 x 8 | 45sq |
| GY 74 | 40 x 8 | 50sq |
| GY 75 | 40 x 8 | 39 ROUND |



Back Weld Plates



C1102 REC



C1102 ROUND

BACKWELD PLATES

| PART No. | AXLE SIZE |
|-------------|-----------|
| C1101 REC | 40 |
| C1102 REC | 45 |
| C1101 ROUND | 40 |
| C1102 ROUND | 45 |
| C1104 ROUND | 39 DIA. |
| C1501 SQ | 40 |
| C1901 SQ | 45 |



Fish Plates



GY 27, GY 29, GY 30, GY 31

FISH PLATES

| PART No. | GUAGE | AXLE | SPRING | HOLE SIZE |
|----------|-------|------|--------|-----------|
| GY 27 | 6mm | 40mm | 45mm | 11mm |
| GY 29 | 10mm | 40mm | 45mm | 14mm |
| GY 30 | 10mm | 45mm | 45mm | 14mm |
| GY 31 | 10mm | 50mm | 45mm | 14mm |



Roller Brackets



GY 59



GY 80



GY 92



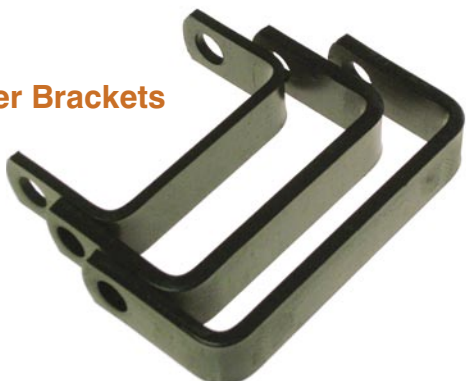
GY 97



GY 98

- GY 7A ROLLER BRACKET**
Material 32 x 6 108mm I D
Finish Black
- GY 13 ROLLER BRACKET**
Material 32 x 8 127mm I D
Finish Black
- GY 15 ROLLER BRACKET**
Material 32 x 8 155mm I D
Finish Black
- GY 59 DOUBLE ROLLER AXLE**
12mm Mild Steel
206mm Overall
- GY 97 SLOTTED BUNK BRACKET**
Material 50 x 8 Slot size 20 x 200
- GY 98 SLOTTED ANGLE BRACKET**
45 x 55 x 5 Slot size 22 x 155

Roller Brackets



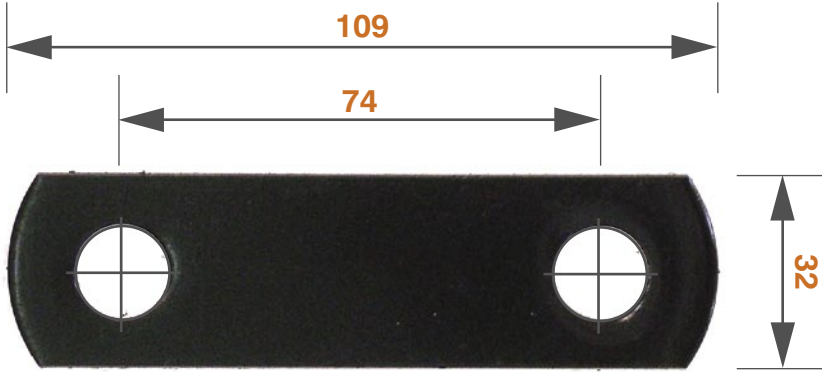
ZINC PLATED ADJUSTING PLATE

| PART No. | LENGTH | THREAD | HOLE | DIA |
|----------|--------|--------|------|------|
| GY 80 | 250 | 175 | 11mm | M 20 |
| GY 81 | 300 | 225 | 11mm | M 20 |
| GY 82 | 350 | 275 | 11mm | M 20 |
| GY 83 | 400 | 325 | 11mm | M 20 |
| GY 91 | 150 | 100 | 11mm | M 16 |
| GY 92 | 200 | 150 | 11mm | M 16 |
| GY 93 | 250 | 200 | 11mm | M 16 |
| GY 94 | 300 | 250 | 11mm | M 16 |

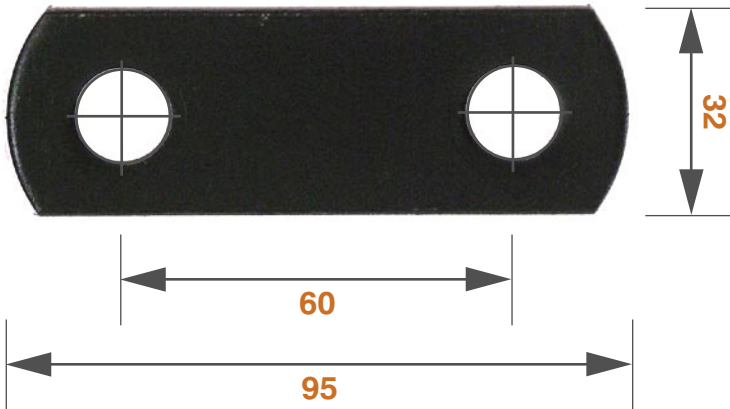
All bolts supplied complete with 2 galvanised nuts and 2 galvanised flat washers



Shackle Plates & Spring Hangers



GY1 & 2



- GY 1 SHACKLE PLATE SHORT**
14.3mm Holes
60mm Hole centres
material 32 x 8mm
- GY 2 SHACKLE PLATE LONG**
14.3m Holes
74mm Hole Centres
- GY 61 SHACKLE U PLATE**

- GY 21 ROCKER ARM HANGER**
With Gusset. Material 50 x 10
19mm hole
- GY 21A ROCKER ARM HANGER**
With Gusset. Material 50 x 10
14.3mm hole
- GY 22 ROCKER ARM HANGER**
No Gusset. Material 50 x 10
19mm hole



GY 21 & GY 21A



GY 6

GY 6A

GY 6C

- GY 6 SPRING HANGER**
Material 32 x 8mm to suit 1 3/4 Spring 14.3
Holes reamed
- GY 6A FRONT SPRING HANGER**
Material 32 x 8mm to suit 1 3/4 Spring 12.7 Hole
- GY 9 SPRING SLIPPER HANGER**
Material 32 x 8mm to suit 1 3/4 Spring



Winch Plates



GY 57



GY 58



GY 60A

- GY 60A UTILUX PLUG BASE 4 HOLE
- GY 57 WINCH BASE PLATE
2 Hole Material 32 x 6
18mm Hole in centre
- GY 58 WINCH BASE PLATE
4 Hole Material 150 x 6